

Specification Approval Sheet

Model: CR123A 1500mAh+PTC

Prepared By/Date	Checked By/Date	Approved By/Date
向洪	杨光	薛江丽

Customer Approval	Confirmation	Date

Note: 1. Kindly please sign on the above and send it back to us if the sample is approved.
2. Kindly please contact us as soon as possible if the sample isn't approved. Thanks!

Guangzhou Great Power Energy & Technoloy Co. Ltd.

Add : 912 Xicun Section,Shiliang Road, Shawan Town, Panyu,Guangzhou,GD,PRC

PC : 511483 Tel: 86-20-39196888

Website: www.greatpower.net

1. Scope

This specification is suitable for the performance of the GREAT POWER *Lithium and Manganese Dioxide* battery.

2. Model

CR123A 1500mAh+PTC

3. Reference Document

IEC60086-2: 2001 Primary batteries-Part 2: Physical and technological specifications, MOD

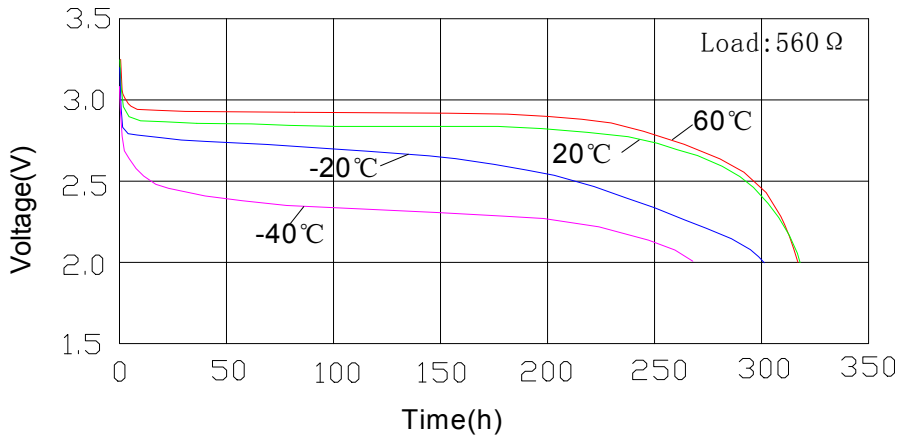
GB 8897.2: 2005 Primary batteries-Part 2: Physical and technological specifications

4. Specification

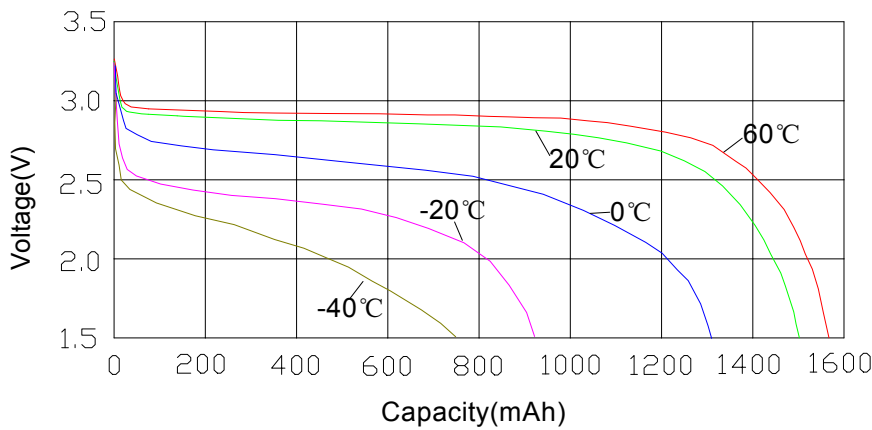
No.	Items	Specification	
1	Nominal Voltage	3.0 V	
2	Capacity (Discharge Current 1mA to 2.0V)	Nominal	1500 mAh
		Minimum	1400 mAh
3	Max. Discharge Current	Continuous	1500 mA
		Pulse	3000 mA
4	Discharge Cut-off Voltage	2.0 V	
5	Weight	Approx. 17 g	
6	Operating Temperature	-40 °C to 60 °C	
7	Storage Temperature	-10 °C to 40 °C	
8	Relative humidity	≤65%	
9	Period of Validity	5 years	
10	Note: Polyswitch (PTC:144) is inside the cell.		

5. Test Conditions and Performance

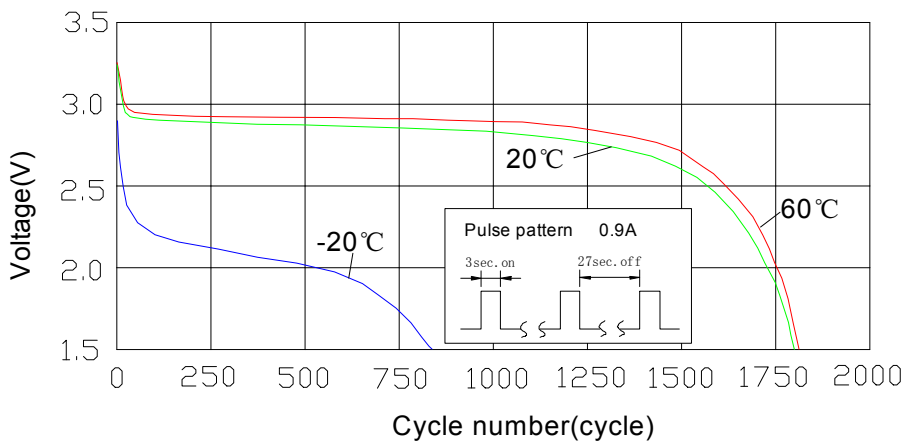
Discharge characteristics on temperature



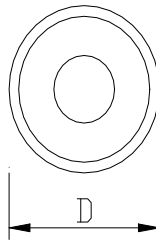
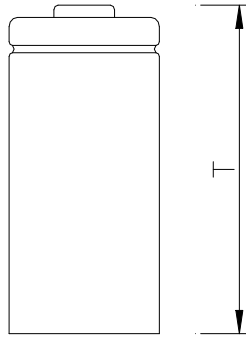
Temperature characteristics(20mA)



Pulse discharge characteristics



6. Drawing (unit: mm)



Items	Description	Dimension
D	Diameter	Max 17.0mm
T	Height	Max 34.5mm

7. Cautions in use

To ensure proper use of the battery please read the manual carefully before using it.

.Handling

- Do not expose to, dispose of the battery in fire.
- Do not put the battery in a charger or equipment with wrong terminals connected.
- Avoid shorting the battery
- Avoid excessive physical shock or vibration.
- Do not disassemble or deform the battery.
- Do not immerse in water.
- Do not use the battery mixed with other different make, type, or model batteries.
- Keep out of the reach of children.

.Storage

- Store the battery in a cool, dry and well-ventilated area.

.Disposal

- Regulations vary for different countries.
- Dispose of in accordance with local regulations.

8. Note

Any other items which are not covered in this specification shall be agreed by both parties.