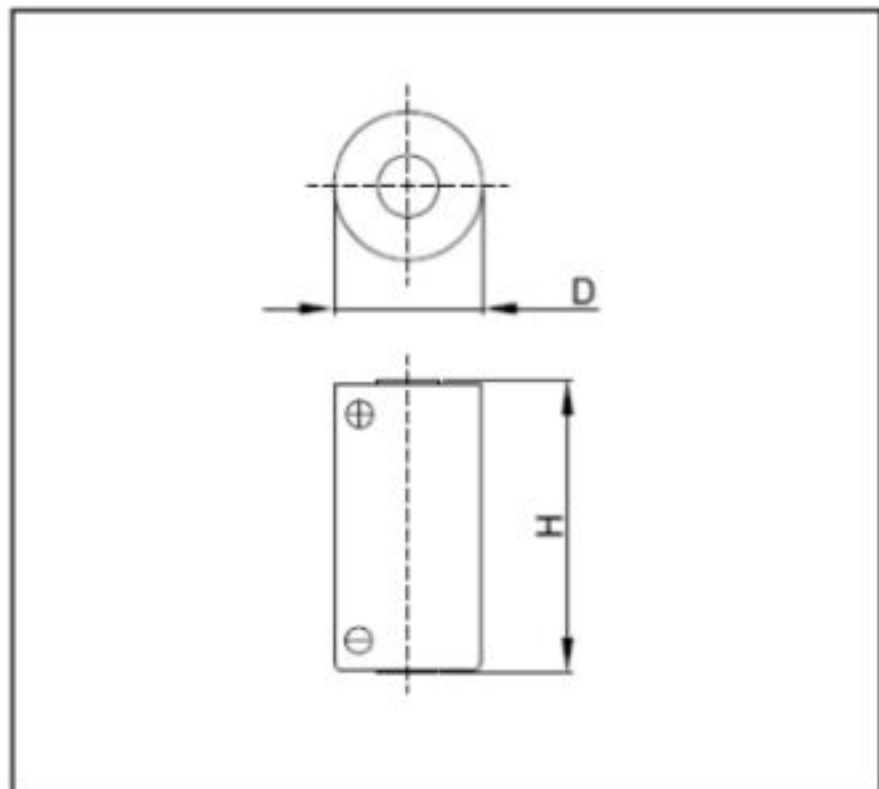




Cell Type CR17335E-R Specifications



Nominal Voltage (V)		3
Nominal Capacity (mAh) ^{*1}		1600
Standard Discharge Current (mA)		5
Max. Pulse Discharge Current (mA) ^{*2}		2500
Operating Temperature Range (°C) ^{*3}		-40 ~ +85
Dimensions (mm)	Diameter (D)	17.0
	Height (H)	33.5
Approx. Weight (g)		17

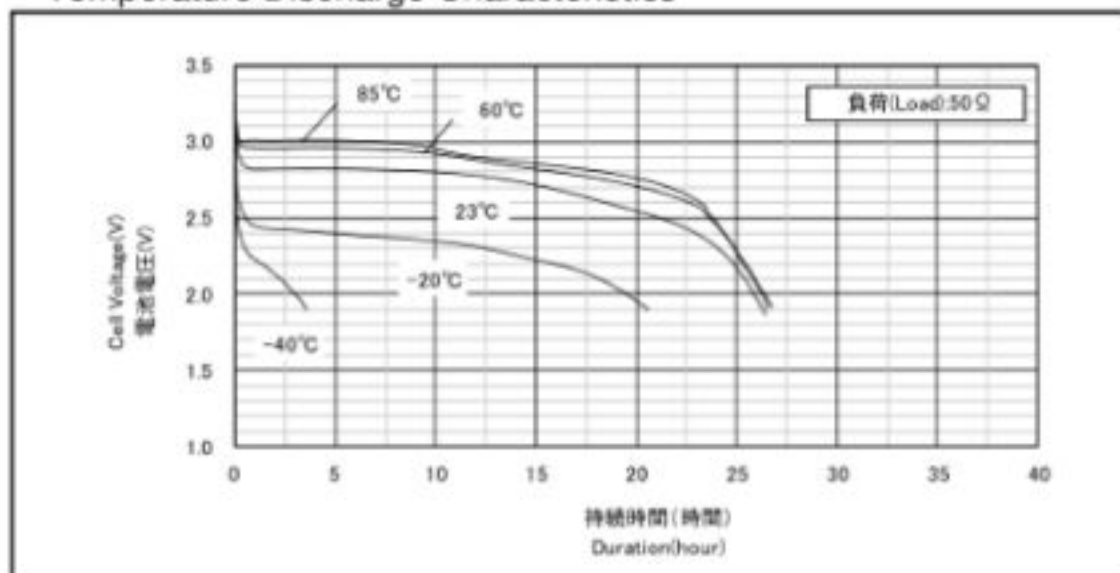
- *1 Nominal capacity is determined at an end voltage of 2.0V when the battery is allowed to discharge at a standard current level at +23°C.
- *2 Current value for obtaining 1.0V cell voltage when pulse is applied for 15 seconds at 50% discharge depth (50% of the nominal capacity) at 23°C.
- *3 Consult with FDK when using batteries at temperatures exceeding -20°C to +60°C range.

Note) Battery Handling Precautions

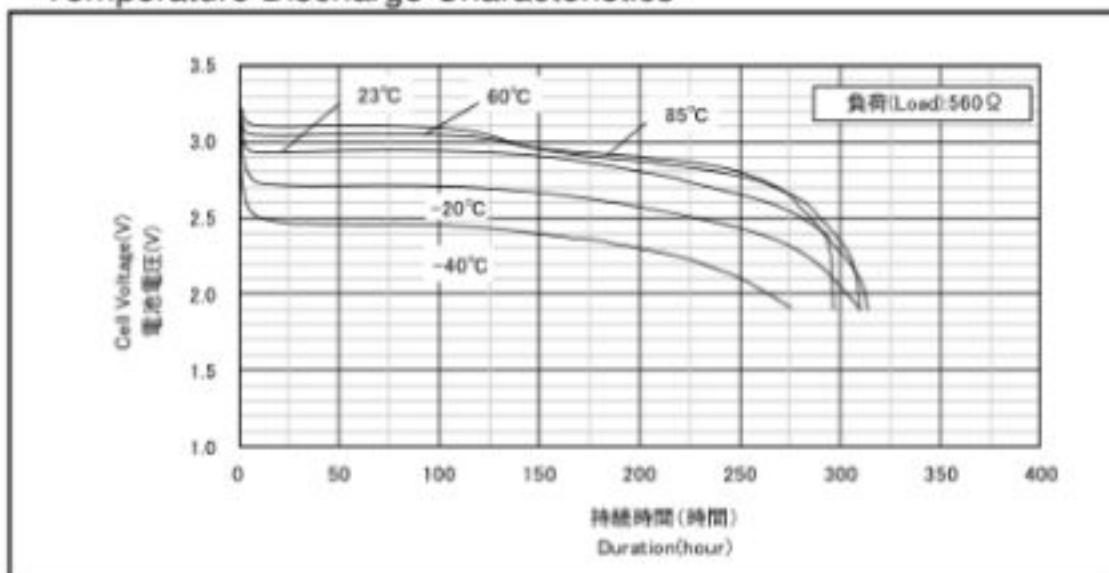
English) http://www.fdk.com/battery/lithium_e/handling_precaution.html
Japanese) http://www.fdk.co.jp/battery/lithium/handling_precaution.html

Typical Characteristics

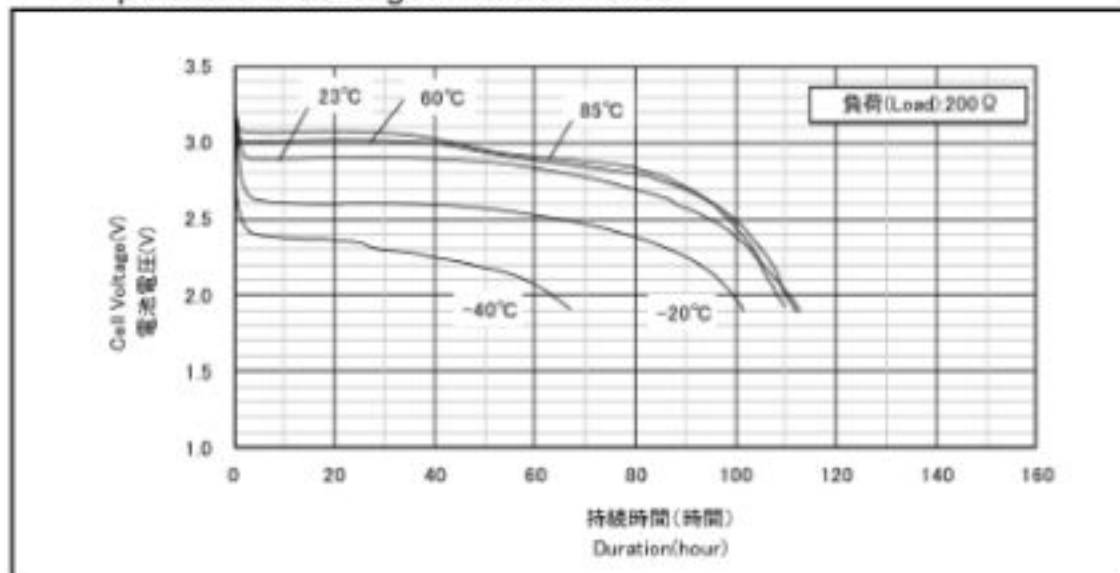
Temperature Discharge Characteristics



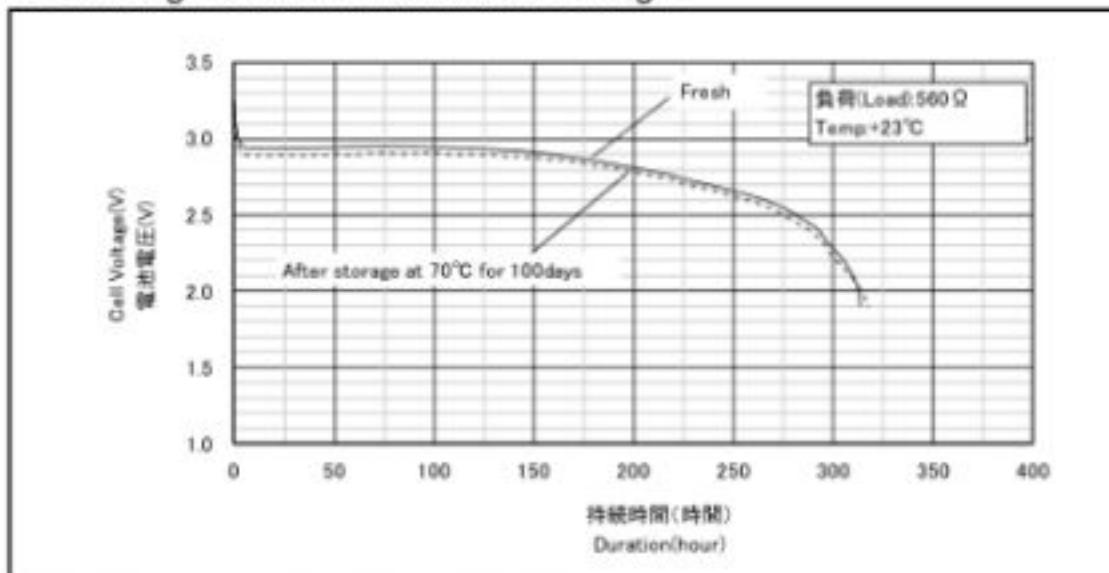
Temperature Discharge Characteristics



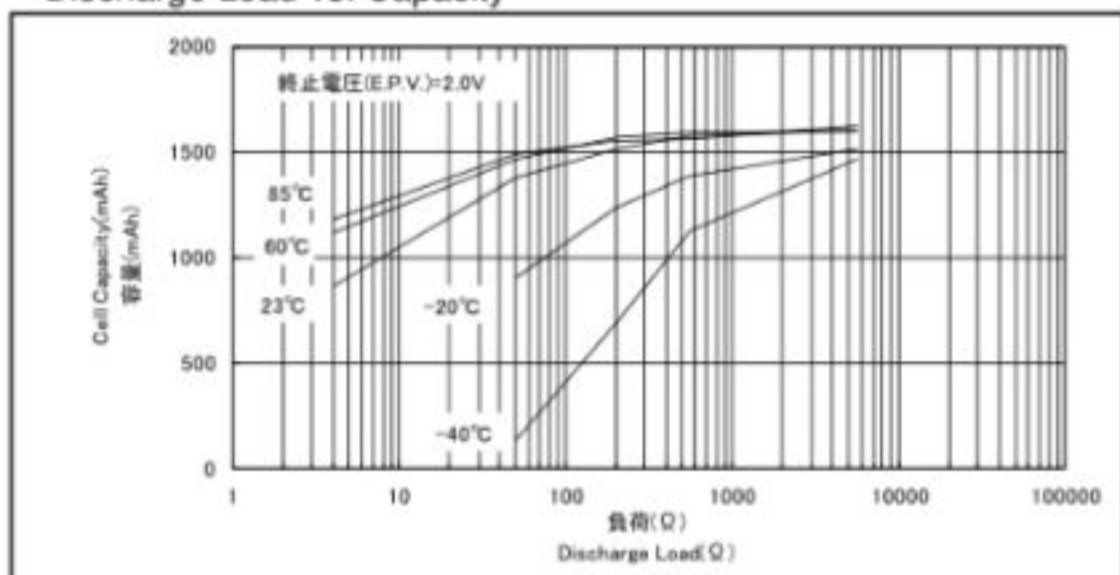
Temperature Discharge Characteristics



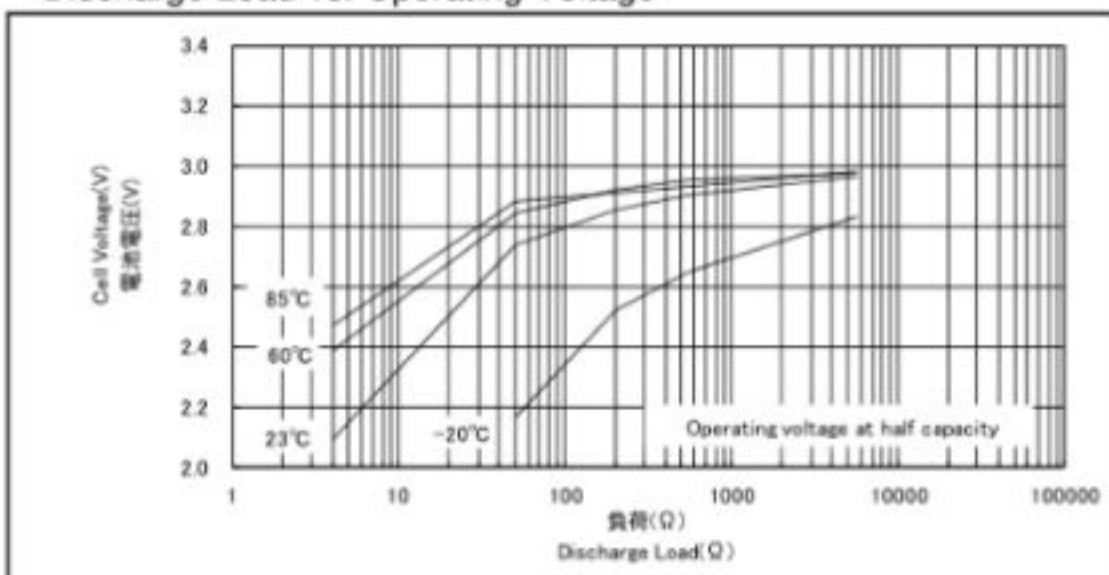
Discharge Characteristics after Storage



Discharge Load vs. Capacity



Discharge Load vs. Operating Voltage



The data in this document are for descriptive purposes only and are not intended to make or imply any guarantee or warranty.

Issued date : 05.2018